



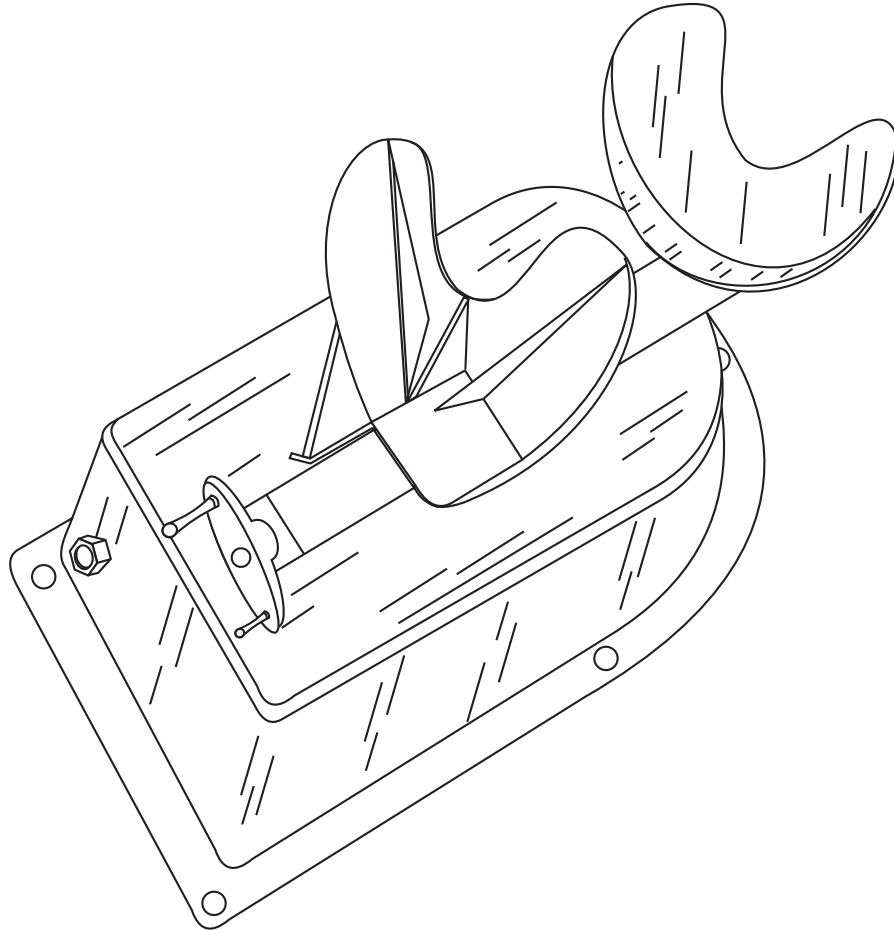
MODEL 2400D

AIR OPERATED PAINT SHAKER

INSTRUCTIONS

PARTS LIST

WARRANTY



WARNING

! SAFETY PRECAUTIONS !



1. For professional use only
2. Keep out of reach of children
3. Use only air tool oil
4. Do not shake aerosols for more than one minute
5. Do not shake if temperature of aerosol can exceeds 100°F
5. Do not use in enclosed areas
6. Maintain proper ventilation at all times



OPERATING INSTRUCTIONS

ASSEMBLY

1. Connect automatic oilier (#2403) to bulk head fitting (#2405) in motor cover (#2406)
USE CAUTION NOT TO ALLOW BULK HEAD FITTING TO TURN WHEN INSTALLING AIR CONTROL VALVE. USE OF THREAD SEALING COMPOUND IS RECOMMENDED.
2. Then connect air control valve (#2401) using brass nipple (#2404) as shown in diagram on page 3.
3. **CAUTION: SHAKER MUST BE FIRMLY SECURED AS FOLLOWS**
Mount shaker securely to optional shaker stand (#2465) using bolts (#2459). Shaker stand must be firmly mounted to floor using suitable fasteners (not Inc). Shaker may also be mounted to a sturdy bench or other platform by replacing bolts (#2459) with suitable fasteners.
4. **FAILURE TO INSTALL AND ADJUST OILIER AS PER INSTRUCTIONS WILL RESULT IN DAMAGE TO THE SHAKER AND WILL VOID THE WARRANTY.**

OPERATION

1. Clamp can securely, use caution not to crush can.
2. **To start shaker:** Quickly open control valve. If shaker fails to start close valve for 5 seconds then reopen.
3. Shake aerosols cans a MAXIMUM of one minute.
4. **DO NOT** shake aerosol can if temperature exceeds 100. F
5. Recommended air pressure 100 -140 PSI.

SPEED CONTROL

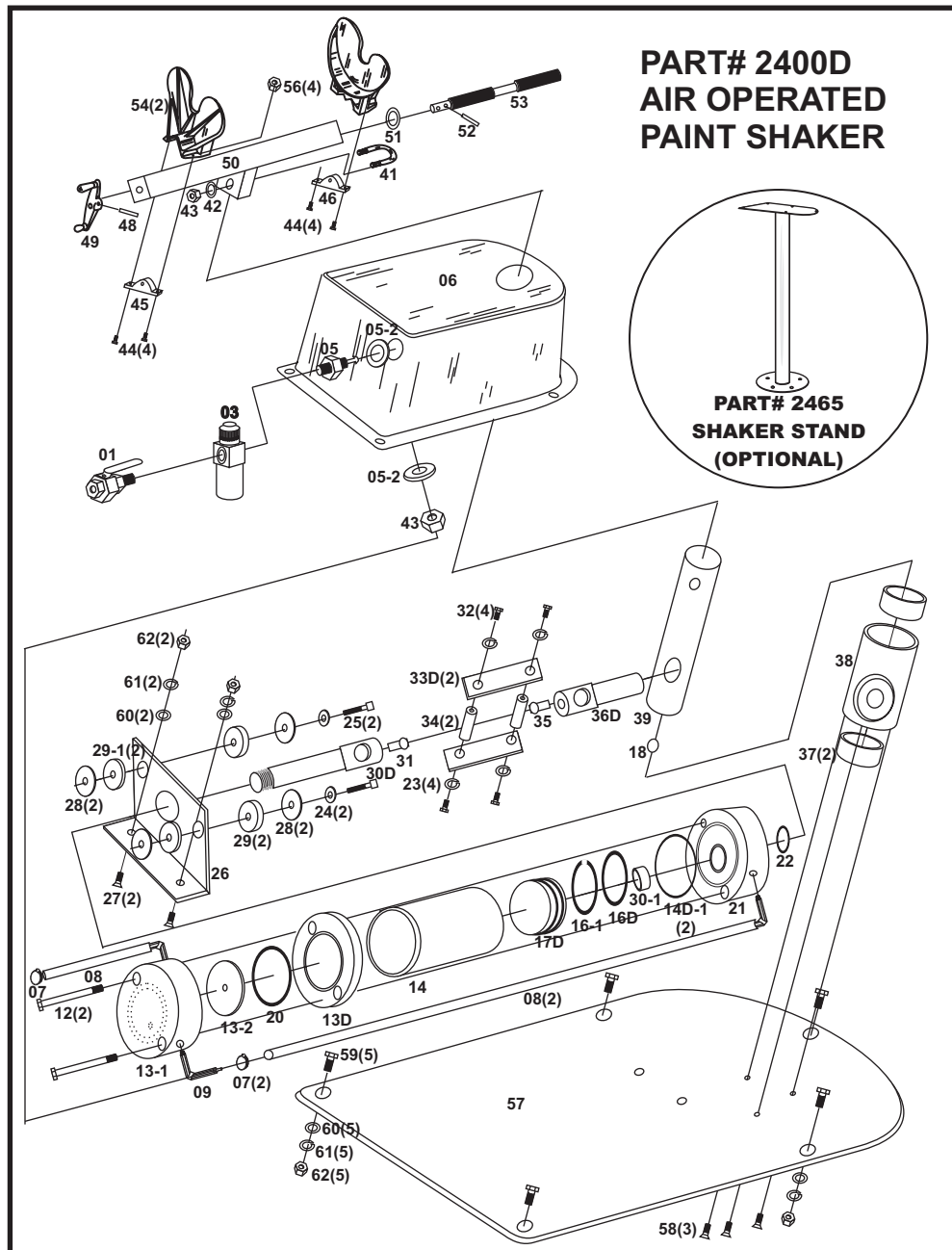
1. To adjust shaking speed slightly open or close air control valve (#2401).
2. **RUNNING AIR PRESSURE HIGHER THAN REQUIRED FOR THE SIZE OF CAN WILL RESULT IN SHORTER LIFE SPAN OF SHAKER AND WILL NOT INCREASE EFFICIENCY.**
3. For Quart & Pint cans close control valve until shaker runs QUIETLY .
4. For gallon cans open control valve slightly to achieve full stroke.

LUBRICATION

1. Use air tool oil ONLY in motor never use motor oil or grease in motor.
2. **ADJUST OILIER TO 1 DROP OF OIL EVERY 30 SECONDS**
3. **DO NOT** use oils that contain petroleum distillates.
4. Grease shafts once every 10 hrs. or every 30 days (1 PUMP).
5. Oil main shaft once every 30 days with air tool oil (10 drops).
6. Failure to follow lubrication specifications will cause premature failure of the machine and VOID the warranty.

Specifications and Recommendations

Air Consumption	Approximately 3.5 cfm
Air Pressure	100-140 PSI
Air Tool Oil	Non-detergent, rust inhibiting, 5w to 10w
Capacity	1 pint - 1 gallon
Grease	lithium or calcium based multipurpose chassis grease
Oil Consumption	1 drop air tool oil every 30 seconds
Shaking Speed	Up to 1000 cycles per minute
Shaking time	2-3 minutes average with quart



Part #	Description	Qty
2401	Air Control Valve	1
2403	Automatic Oiler	1
2404	Brass Nipple	1
2405	Bulk Head Fitting	1
2405-2	1 1/16" OD x 1/2" ID	1
2406	Motor Cover	2
2407	Hose Clamp	2
2408	Air Hose Assembly	2
2409	Inlet Ell Fitting	2
2412	1/4" x 4"-20 Hex Cap Screw	2
2413D	Motor Back Plate	1
2413-1	Rear Valve Body	1
2413-2	Valve Disc	1
2414D	Motor Body	1
2414D-1	Motor Body O-Ring	2
2416D	Piston O-Ring	1
2416-1	Piston Wear Ring	1
2417D	Piston	1
2418	3/8" Ball Bearing	1
2420	Valve Body O-ring	1
2421	Motor Front Plate	1

2422	Motor Shaft O-Ring	1
2423	1/4" Lock Washer Zinc	4
2424	1/4" Flat Washer Zinc	2
2425	1/4" X 1 3/4" Socket Cap Bolt	2
2426	Motor Mounting Bracket	1
2427	5/16" X 1" Flat HD Socket Bolt	2
2428	1/4"x1" Fender Washer Zinc	4
2429	1" X 3/8" Rubber Bushing	4
2430D	Motor Shaft	1
2430D-1	Motor Shaft Bushing	1
2431	Zert-1/8" Drive	1
2432	1/4" X 1/2"-20 Hex Tap Bolt	4
2433	Connector Bars	2
2434	Connector Pins	2
2435	57 Degree Zert-1/8" NPT	1
2436	Main Shaft Connector Rod	1
2437	Main Shaft Bushings	2
2438	Main Shaft Tube	1
2439	Main Shaft	1
2441	5/16" U Bolt Zinc	1
2443	5/16"-14 Hex Lock Nut Zinc	2

Part #	Description	Qty
2444	3/8" x 1 1/4"-16 Hex Tap Bolt	1
2445	Clamp Nut (LH)	1
2446	Clamp Nut (RH)	1
2448	Handle Roll Pin	1
2449	Clamp Handle	1
2450	Clamp Frame	1
2451	7/16" SAE Flat Washer	1
2452	Clamp Screw Roll Pin	1
2453	Clamp Screw	1
2454	Jaw	2
2455	3/8" Lock Washer Zinc	4
2456	3/8"-18 Hex Nut Zinc	4
2457D	Shaker Base Plate	1
2458	#10x5/8" Flat HD Socket Bolt	3
2459	5/16" X 1"-18 Hex Tap Bolt	5
2460	5/16" SAE Flat Washer	7
2461	5/16" Lock Washer	7
2462	5/16"-18 Hex Nut Zinc	7
2463	Motor Complete	
2464	Main Shaft Tube Assembly	
2465	Paint Shaker Stand	



MODEL 2400D

AIR OPERATED PAINT SHAKER

1 Year Limited Warranty

Detro manufacturing warrants this equipment to be free from defects in material and workmanship for a period of 90 days from the date of purchase. This warranty is limited to the original purchaser and is not transferable. Detro Manufacturing's responsibility is limited solely to the replacement or repair of defective part(s) and labor. FAILURE TO INSTALL, MAINTAIN AND ADJUST OILIER AS PER INSTRUCTIONS WILL RESULT IN DAMAGE TO THE SHAKER AND WILL VOID THE WARRANTY. Warranty does not cover any damage consequential, incidental or otherwise.

WARRANTY CONDITIONS:

1. Applies to original purchaser only and is not transferable.
2. Covers defects in material and workmanship only.
3. Whether to repair or replace defective parts is the sole discretion of the manufacturer.
4. All repairs must be performed by Detro Manufacturing Inc. or an authorized agent.
5. Repairs made by anyone other than those stated above **VOIDS** this warranty.
6. Paint shakers sent in for repairs must include copy of original invoice showing purchase date.
7. Warranty does not cover damage caused by misuse, abuse or failure to follow recommended maintenance procedures .

REPAIRS or SERVICE:

Return shaker to:
Detro Manufacturing Inc.
1721 SE Grace Ave. Unit E
Battle Ground, WA. 98604
PH: (360) 687-9960
TOLL FREE: (877) 883-2869
FAX: (360) 687-7184