



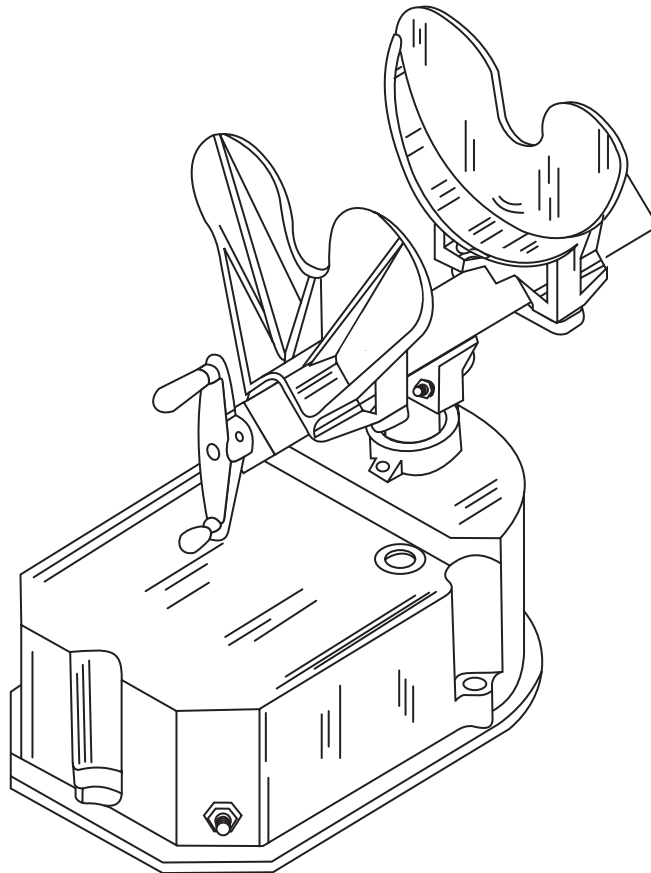
MODEL 2700

AIR OPERATED PAINT SHAKER

INSTRUCTIONS

PARTS LIST

WARRANTY



WARNING

! SAFETY PRECAUTIONS !



1. For professional use only
2. Keep out of reach of children
3. Use only air tool oil
4. Do not shake aerosols for more than one minute
5. Do not shake if temperature of aerosol can exceeds 100°F
5. Do not use in enclosed areas
6. Maintain proper ventilation at all times



SPECIFICATIONS

Capacity:

Pints through 4 liter round cans, including gallons, Imperial gallons, most aerosols (with caps) and square gallons. Up to 16 lbs. gross can weight. Takes 1/4 and 1/2 pints stacked or with spacer.

Speed:

Up to 700 cycles/minute at 30° shake angle. Adjustable at control valve, automatically compensates for can size.

Air Pressure:

70 to 175 PSI (lbs./in gage) (600 to 1200 kPa). 2 Line pressure over 175 PSI requires regulator and relief valve upstream of air hose.

Air Inlet Threads:

1/4-inch PTF (Seal with thread tape or thread sealant).

Air Consumption:

Approximately 4.3 CFM (0.002 M3/sec) free air with 1 gallon (U.S.) 12 lb. can at 30° shake angle.

Recommended Oil:

Petroleum 5W to 10W Non-detergent Rust Inhibiting Air Tool Oil such as Lubriplate Rockwell 10 R. Oil should contain no gum removers or petroleum distillates. Do not use motor oil.

Oil Consumption:

3 drops air tool oil at air inlet before every use, or install automatic lubricator and set oil drip rate per "ADJUST LUBRICATOR". (See "OPERATION".) 10 minutes maximum operation between manual oilings.

Grease:

Multipurpose calcium or lithium-based chassis grease. Relubricate every 3 to 6 months more often in severe service.

Recommended Shake Time:

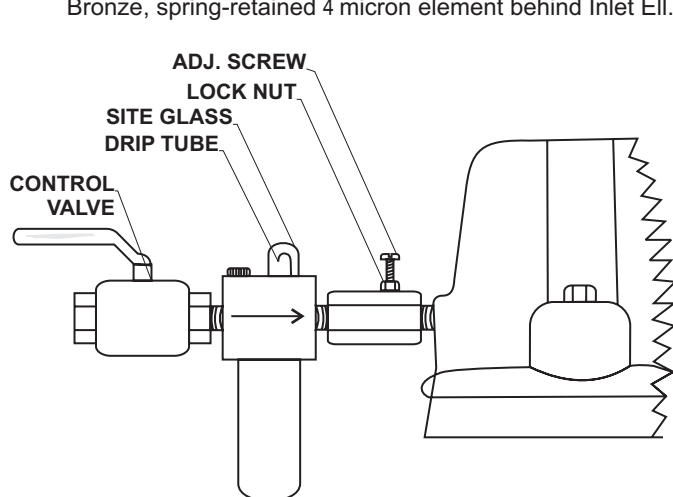
1-1/2 minutes, more for severely settled products or low air pressure.

Shake Angle:

If operating at over 120 PSI pressure, must be set to 30° with full gallon can clamped, air at maximum normal line pressure. (See "OPERATION".)

Final Filter:

Bronze, spring-retained 4 micron element behind Inlet Ell.



OPERATION

CLAMP CAN firmly, but avoid crushing can. Clamp mostly empty cans and aerosol cans with lids toward clamp handle. Clamp square gallons lid up, long sides against clamp jaws, corners resting on jaw cradles. Tighten square gallons securely with can straight up. **WATCH SQUARE GALLONS AND AEROSOL CANS WHILE SHAKING** to make sure they don't leak or come loose. **DO NOT SHAKE AEROSOLS FOR MORE THAN ONE (1) MINUTE. DO NOT SHAKE AEROSOLS IF CAN TEMPERATURE IS OVER 100° F (38° C).**

START AND STOP shaker by opening and closing control valve quickly, about 1/4 turn. If shaker stops exactly at center position or is not getting enough oil, it may not start automatically. If this occurs close control valve, move can clamp to one side and re-start.

GREASE - LUBRICATE clamp screw and both grease zert fittings once every three months (more often in severe duty/outdoor/dirty areas). Grease crank pin zert (one shot) through vent hole when can clamp is rotated left to stop. Dry lube clamp frame.

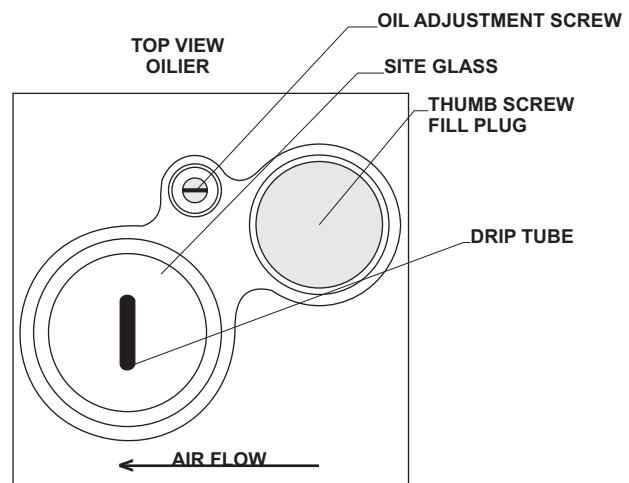
CHECK/ADJUST SHAKE ANGLE if air pressure at shaker is over 120 psi (780 kPa) adjust as follows: With air line at maximum normal pressure,

- Clamp up a full one-gallon round can of pain and start shaker
- Loosen 3/8-inch lock nut at Adjustment Screw on Air Inlet Fitting and adjust screw to obtain a total shaking angle of motion of about 30°.
- Stop shaker and tighten lock nut while holding adjustment.

ADJUST LUBRICATOR Close lubricator adjusting screw (turn clockwise) until **SLIGHTLY** snug. Start shaker then open oilier adjusting screw (turn counter clockwise) 1/8 turn. After about 1 minute you should see oil dripping from the drip tube in the site glass. If oil doesn't start dripping, open adjusting screw another 1/16 turn. Adjust drip rate to **1 DROP EVERY 20 TO 30 SECONDS.**

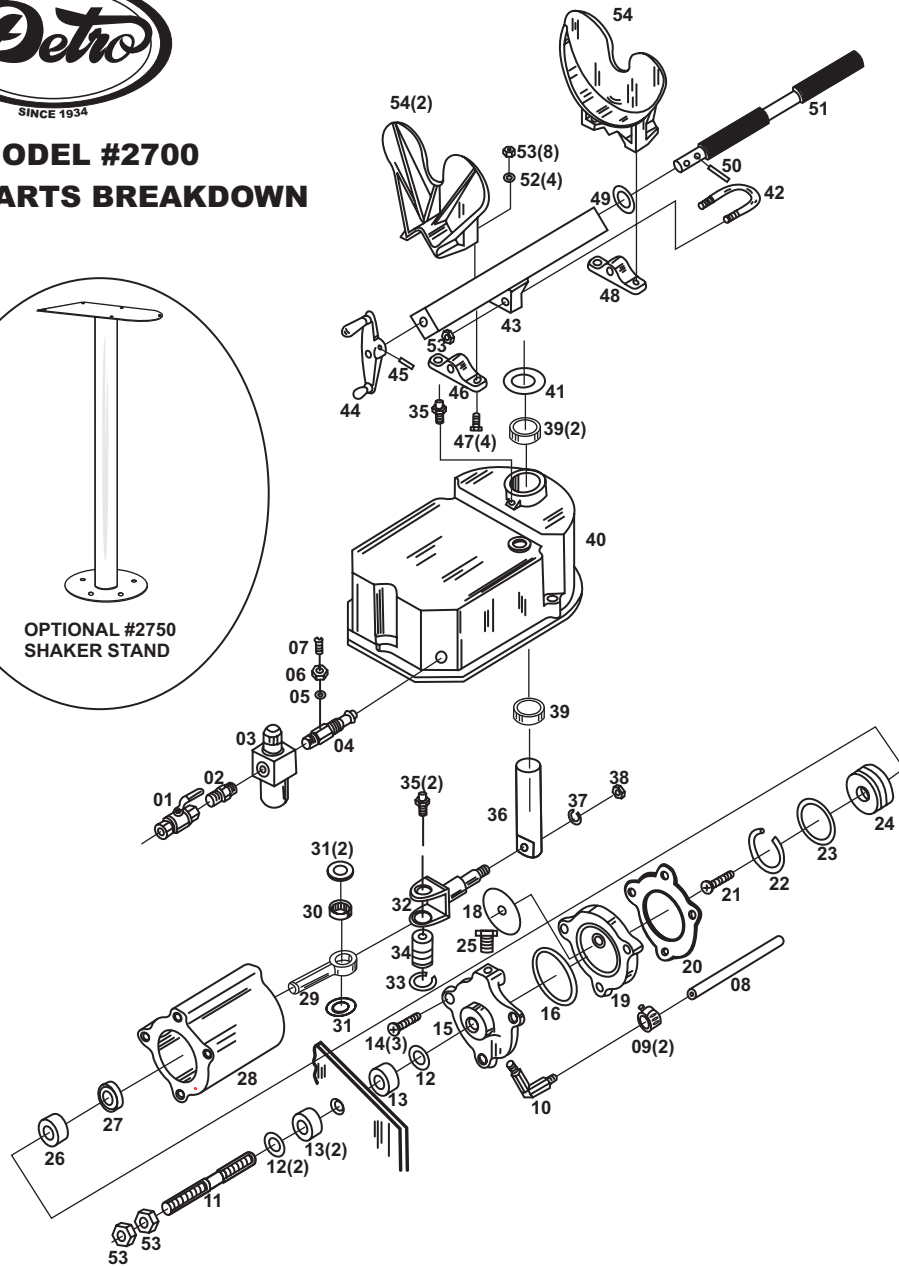
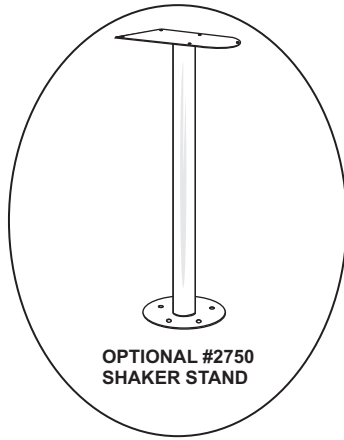
NOTE: Each time the Shaker is started, lubricator may take a few seconds to start dripping oil. **DO NOT FORCE** the adjustment screw. It stops when fully open and when closed. If oilier is not working, check -oil level and see "TROUBLESHOOTING".

CHECK OIL LEVEL once a week (more often for heavy duty); Unscrew lubricator bowl and dump watery/milky oil out, Refill to level mark with air tool oil and carefully re-install. Make sure bowl gasket ring is in place and screw bowl on straight. **NOTE:** Vibration may make oiling invisible if lubricator is mounted directly to shaker. Set feed rate at light load and reduced speed and unscrew bowl and check oil level after several hours to ensure level is dropping and oil is feeding.





**MODEL #2700
PARTS BREAKDOWN**



Part#	Description	Qty
80101	Control Valve	1
80102	Brass Nipple	1
80103	Automatic Oilier	1
80104	Inlet Fitting	1
80105	Adj. Seal	1
80106	Adj. jam Nut	1
80107	Adj. Screw	1
80108	Air Hose	1
80109	Hose Clamp	2
80110	Inlet Ell Fitting	1
80111	Cylinder Stud	1
80112	Shock Metal Washer	2
80113	Shock Rubber Washer	2
80114	Valve Body Screw	3
80115	Lower Valve Body	1
80116	Valve Body O-Ring	1
80117	Cap Screw	1
80118	Valve Disc	1

Part#	Description	Qty
80119	Upper Valve Body	1
80120	Packing	1
80121	Piston Screw	1
80122	Wear Ring	1
80123	Piston O-Ring	1
80124	Piston	1
80125	Cock Air	1
80126	Rod Bearing	1
80127	Rod Seal	1
80128	Cylinder Body	1
80129	Cylinder Rod	1
80130	Rod End Bearing	1
80131	Crank Thrust Washer	2
80132	Crank Arm	1
80133	Crank Pin Ret .Ring	2
80134	Crank Pin	1
80135	Zerk Fitting	2
80136	Main Shaft	1

Part#	Description	Qty
80137	Spring Lock Washer 1/2"	1
80138	1/2"-12 Nut	1
80139	Main Bearing	2
80140	Housing: Assembly	1
80141	Thrust Washer	1
80142	U-Bolt	1
80143	Clamp Frame Weld	1
80144	Handle	1
80145	Roll Pin	1
80146	Clamp Nut (L H)	1
80147	Jaw Bolt	4
80148	Clamp Nut (R.H.)	1
80149	Thrust Washer	1
80150	Roll Pin	1
80151	Clamp Screw	1
80152	Jaw Shin	4
80153	3/8"-16 Nut	8
80154	Jaw	2



MODEL 2700

AIR OPERATED PAINT SHAKER

90 Day Limited Warranty

Detroit manufacturing warrants this equipment to be free from defects in material and workmanship for a period of 90 days from the date of purchase. This warranty is limited to the original purchaser and is not transferable. Detroit Manufacturing's responsibility is limited solely to the replacement or repair of defective part(s) and labor. Warranty does Not cover any damage consequential, incidental or otherwise.

WARRANTY CONDITIONS:

1. Applies to original purchaser only and is not transferable.
2. Covers defects in material and workmanship only.
3. Whether to repair or replace defective parts is the sole discretion of the manufacturer.
4. All repairs must be performed by Detroit Manufacturing Inc. or an authorized agent.
5. Repairs made by anyone other than those stated above **VOIDS** this warranty.
6. Paint shakers sent in for repairs must include copy of original invoice showing purchase date.
7. Warranty does not cover damage caused by misuse, abuse or failure to follow recommended maintenance procedures .

REPAIRS or SERVICE:

Return shaker to:
Detroit Manufacturing Inc.
1721 SE Grace Ave. Unit E
Battle Ground, WA. 98604
PH: (360) 687-9960
TOLL FREE: (877) 883-2869
FAX: (360) 687-7184